

SUBCOMMITTEE ON WATER POLICY

October 24, 2024

11:30 am

Jim Stark, Director

MEETING AGENDA

SUBCOMMITTEE ON MINNESOTA WATER POLICY: OCTOBER 24

Call to order: Senator Weber

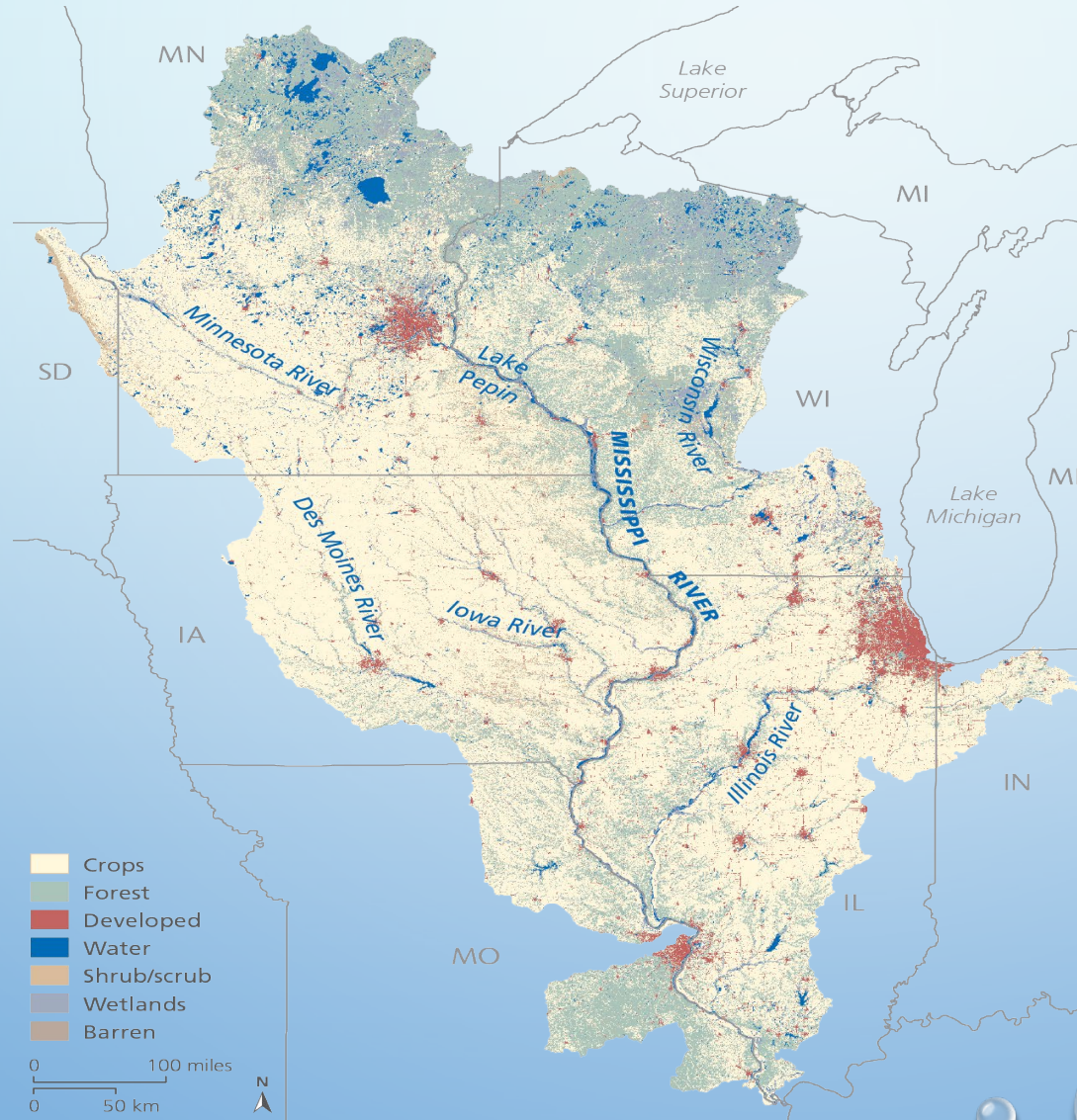
- 1. Approval of minutes from July 15**
- 2. introduction: Dr. Bob Tipping, Director, Minnesota Geological Survey**
- 3. August field tour with focus on legislation and funding: Crystal Mathisrud/Jim Stark**
- 4. Straight River Update: Summary of recent reports in the impact of irrigation on the straight river: Jason Moeckel (DNR) and Kevin Stroom (MPCA)**
- 5. Requests for legislative consideration:**
 - Rob Sip, Director, Red River Water Management Board**
 - Scott Sparlin, Minnesota River Congress**
 - Robyn Dwight: Keep it Clean Initiative**
 - Jake Wildman: President-Minnesota Irrigator's Association**
 - Jeff Forester: Minnesota Lakes and Rivers**
 - Announcements**
 - State Drinking Water Action Plan, Tannie Eshenaur (MDH)**
 - Rapidan Dam Failure- Jim Stark**
- 6. Adjourn**



BOB TIPPING, MGS DIRECTOR

**Introduction: Dr Bob Tipping
Director, Minnesota Geological Survey**

AUGUST FIELD TRIP: UPPER MISSISSIPPI RIVER WATERSHED- RECAP



FIELD VISIT: UPPER MISSISSIPPI RIVER

○ Irrigation and Water Issues:

- Little Rock Creek**
- Straight River**

The importance of cold deep-water lakes

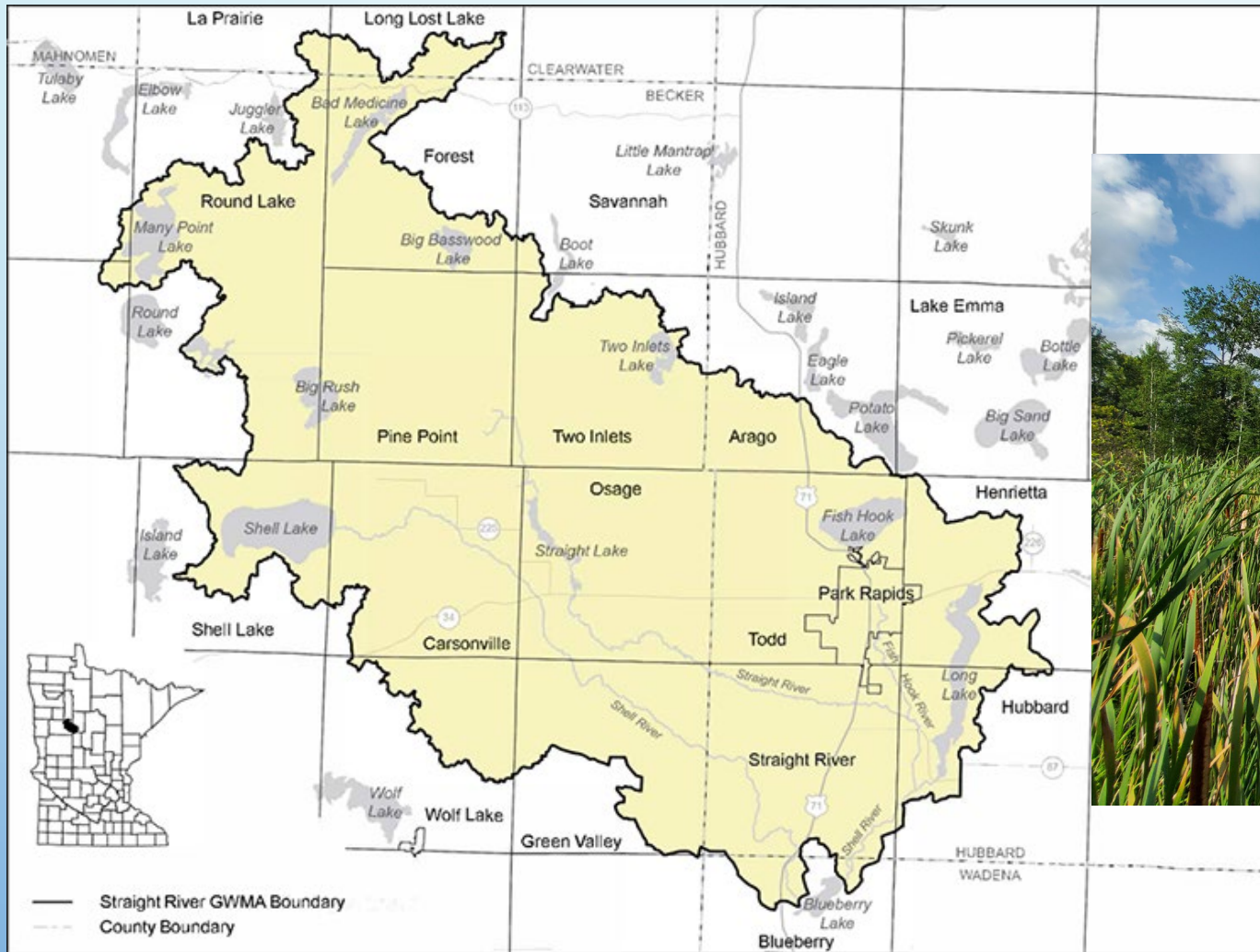
LITTLE ROCK CREEK



LITTLE ROCK CREEK-2

1. **DNR: Commissioner's Order to protect the ecology of Little Rock Creek**
2. **Recognizes that water use has a negative impact on the stream ecosystem**
3. **Establishes a sustainable diversion limit for Little Rock Lake**
4. **Provides an opportunity to permit holders to submit a plan to resolve the water use conflict**
5. **Withholds consideration of applications for additional water use within the zone of irrigation influence until the conflict is resolved.**
6. **DNR has engaged a consulting firm to work with Irrigators on a path forward**

STRAIGHT RIVER, PARK RAPIDS



- **THE STRAIGHT RIVER GWMA STRETCHES ACROSS 236,142 ACRES, OR 369 SQUARE MILES.**
- **MAP FROM DNR GWMA WEBSITE [STRAIGHT RIVER GROUNDWATER MANAGEMENT AREA \(GWMA\) | MINNESOTA DNR \(STATE.MN.US\)](https://www.dnr.state.mn.us/gwma/straight_river/), PHOTO FROM HCSWCD 2023 REPORT**

STRAIGHT RIVER GWMA

- **DNR reports: Groundwater use is having a minimal effect on streamflow**
- **The MPCA has a new report suggesting that Nitrate is impacting the ecology of the river**
- **We will hear from both agencies today**

PRESENTATION

Crystal's Slides follow – 7 minutes

PRESENTATIONS –STRAIGHT RIVER

- **Jason Moeckel (DNR)**
- **Kevin Stroom (MPCA)**

PRESENTATION 2

Rob Sip:

Director, Red River Water Management Board

PRESENTATION -3

Scott Sparlin, Minnesota River Congress

PRESENTATION-4

**Robyn Dwight:
Keep it Clean Initiative**

KEEP IT CLEAN INITIATIVE



PROPOSED BILL

HF 2662 Establishment. The commissioner, in consultation with the Board of Water and Soil Resources and the commissioners of the Pollution Control Agency and health, must develop and administer a statewide Keep It Clean program to prevent water pollution due to garbage and human waste left on the ice of state waters during winter use

PRESENTATION-5

**Jake Wildman:
President-Minnesota Irrigator's Association**

PRESENTATION-6

Jeff Forester: Minnesota Lakes and Rivers

ANNOUNCEMENTS

State Drinking Water Action Plan
Tannie Eshenaur (MDH)

RAPIDAN DAM FAILURE

- **11.6 MILLION CUBIC YARDS OF SEDIMENT BEHIND THE DAM**
- **THAT'S ABOUT EQUAL TO A MILLION DUMP TRUCKS !**
- **FOR SOME PERSPECTIVE, AVERAGE DAILY SEDIMENT LOAD IN THE MINNESOTA RIVER, AT MANKATO, DOWNSTREAM FROM THE BLUE EARTH RIVER, IS EQUAL TO 2,700 TONS PER DAY. THAT'S ABOUT 260 DUMP TRUCKS PER DAY OR 96,000 DUMP TRUCKS PER YEAR.**
- **THE FAILURE MAY HAVE RELEASED AN ADDITIONAL 100 YEARS OF SEDIMENT TO THE MINNESOTA**



ADJOURN

- **NEXT MEETING? NOVEMBER**
- **FOCUS ON REQUESTS FOR LEGISLATION**
- **ADJOURN**